

ROTARY HOUSE REFURBISHMENT



Residents and Families Update



Issue 19 | Update – 24 April 2025

Dear residents, families and representatives,

It was lovely to see so many of you visiting the refurbished wing of Level Two this week. We are so pleased with the new spaces and the feedback has been very positive.

For those of you who were unable to attend we are delighted to share the below photos of the updated spaces with you.

Resident suites

Fourteen resident suites have been completely refurbished and designed based on codesign principles including feedback from residents, families and staff from the pilot suite.

The suites include a spacious lounge, a kitchenette, a private ensuite, generous storage, and a light filled bedroom. Each suite includes individually controlled air conditioning, smart lighting, and two wall mounted televisions.



ROTARY HOUSE REFURBISHMENT



Residents and Families Update

Dining room

The new dining room features a separate 'back of house' servery to minimise noise and create relaxing mealtimes for residents. Sliding doors fill the room with natural light making this a bright and welcoming space, with modern furnishings and a self serve coffee machine.



Reading room

The reading room has been thoughtfully designed to be a quiet and comfortable space for all North Adelaide residents to enjoy. The room features soft lighting, a cosy fireplace, comfortable chairs and a selection of regularly changed reading materials. This room can be booked for private gatherings, for bookings please speak to reception.



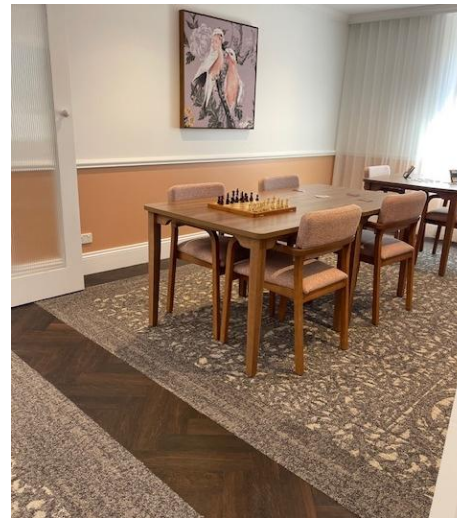
ROTARY HOUSE REFURBISHMENT



Residents and Families Update

Games room

The new games room is available for all North Adelaide residents to enjoy and provides an inviting space for residents to play games together, with family and friends, or on their own. With a wall mounted smart television and plenty of games to choose from, this space can also be booked for private gathering or even for use as a private dining room. For bookings please speak to reception.



Corridors

The new spaces are all connected by refurbished corridors which are bright, modern and inviting. The walkways are lined with beautiful artworks and seating is provided at regular intervals for residents to rest as needed.



ROTARY HOUSE REFURBISHMENT



Residents and Families Update

Residents will be moving into the new suites from Monday 28 April and we are delighted to welcome these residents into their new suites.

We are now starting to prepare for Stage Two, which will complete the refurbishment of Level Two.

To ensure the safety of our residents, staff, families and neighbours, Kennett Builders will be setting up a dedicated drop off and entry point adjacent to the Rotary House entrance on Buxton Street, as this is where they will be receiving deliveries and entering the building. They will be using the lift next to Rotary House reception and so this lift will be unavailable for residents, visitors and staff use until Stage Two concludes which we anticipate around October 2025. During this time we ask that all residents, families and staff use the central lift near Grivell Hall.

The dedicated entry point will have external fencing which is expected to be installed on Tuesday 29 April and the lift next to reception is expected to be closed from Monday 5 May. Please see below images of the areas which will be blocked off for this stage.



Again we thank you all for your patience and understanding throughout this process. Next fortnight we will share more information about what is involved in Stage Two including timing and the new spaces being created.

Who can I contact for more information?

If you have any questions or concerns, please email RHrefurbishment@helpinghand.org.au, or speak to reception.